

Thomson Reuters Elektron Data Platform

Real-Time Venue Data For MiFID II

MiFID II is redefining best practice in our industry

Organizations bound by MiFID II are now finding that rules around pre- and post-trade transparency, best execution, transaction cost analysis and market data reporting are having a significant impact on their data requirements. In addition, to meet the aims of increasing market transparency, over 28 new venues have been created that are providing new data from which people are making trading decisions.

Across the sell-side and buy-side, institutions are also automating their trading workflows and this is driving strong demand for a comprehensive price discovery solution, to help provide the levels of transparency and efficiency needed.

These changes, driven by regulation and automation strategies, are leading to a global shift in the way firms conduct their trading operations.

Key Features and Benefits

Thomson Reuters strives to help you fulfill your regulatory and compliance obligations with our single-platform MiFID II data solution.

- We on-board all content from trade reporting venues (APAs, MTFs, etc.) and normalize and enhance all the data sets. This includes real time, reference, time series data, and more.
- We provide two types of service to best fit your workflow:
 - i. For traders, our **single venue service** provide live pre- and post-trade data for all asset classes, so you can benefit from full market transparency
 - ii. For fixed income research and strategy validation, our **aggregated service** provides a single connection to multiple venues, giving you a broad market overview
- To help you meet TCA and BestEx requirements, our Velocity Analytics 8 platform, combined with the venue data, can provide you with a highly customizable analytics solution.

Venues include:

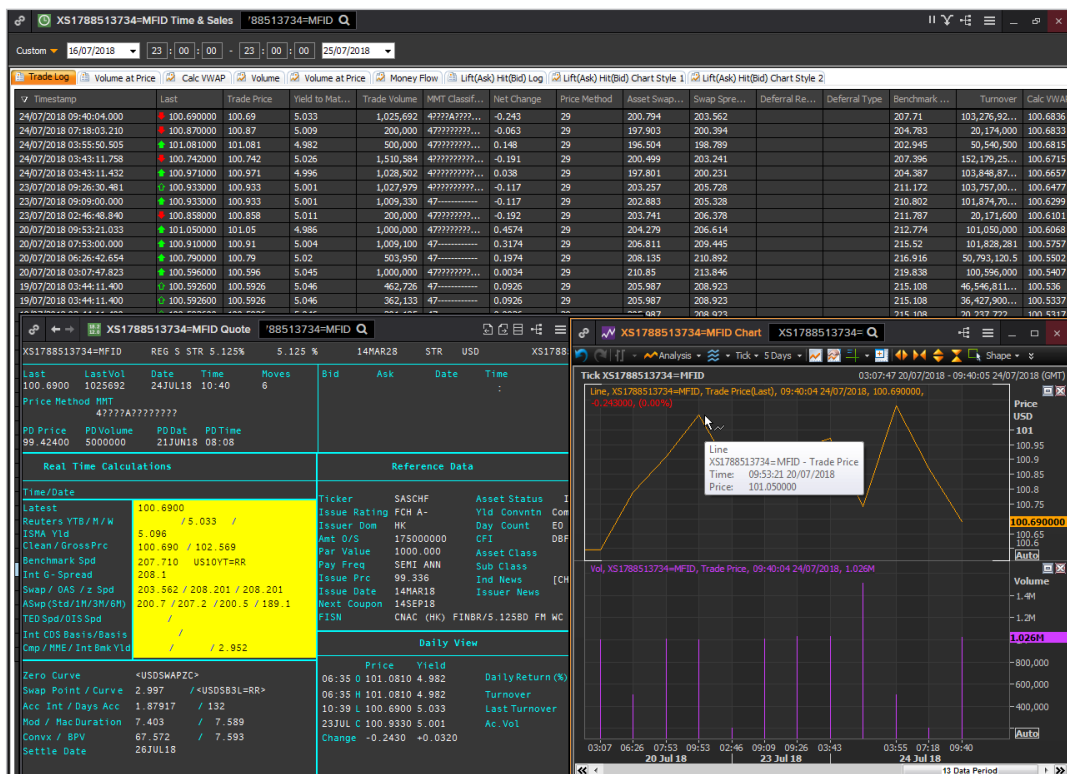
- Thomson Reuters
- Tradeweb APA & MTF
- Trax APA (MarketAxess)
- MTS Bondvision
- Bloomberg APA & MTF
- Oslo Børs APA
- TRADEcho APA (LSE)
- Cboe Europe APA
- NASDAQ Nordic APA
- Vienna Stock Exchange APA
- Deutsche Boerse APA
- Athens Exchange APA
- Budapest Stock Exchange APA
- Euronext APA
- TP ICAP MTF/OTF
- BGC APA/MTF/OTF
- BME APA

MiFID II Venue Data Benefits

For both sell-side and buy-side firms, the wealth of new trade data available via the single and aggregated services provides many benefits.

Field of interest	Benefit
Pre- and post-trade transparency	<ul style="list-style-type: none"> Price discovery helps firms price products and develop trading strategies Normalized and enriched data with additional fields (price, yield, security description, analytics, and integrated pricing with reference data) provides even greater levels of market insight Helps provide sell-side firms with the edge in the new competitive arenas of managing requests for quote (RFQ) and responses, and balancing the size and timeliness of execution, choice of participants in the process and risk of market impact
Best execution	<ul style="list-style-type: none"> Enables firms to comply with best execution requirements for fixed income Helps sell-side firms demonstrate an edge in offering clients high quality execution, as they can make more informed decisions on their trading execution strategy and counterparty choices Provides flexible solutions to help firms manage additional costs incurred by the increased need for market data
APA connectivity	<ul style="list-style-type: none"> The aggregated service enables firms to quickly obtain data from the increased number of available venues, providing an efficient way to analyze and integrate MiFID II Fixed Income Trade data Firms don't need to worry about establishing new relationships with APAs

Data for China National Chemical Corp: CNAC HK FINBRIDGE CO LTD



Elektron® Data Platform

Thomson Reuters Elektron Data Platform integrates and delivers all the content and capabilities you need to make smarter trading and investment decisions, ahead of your competitors.

A trusted source for your data

Lower total cost of ownership. Higher return on investment.

Powers your success

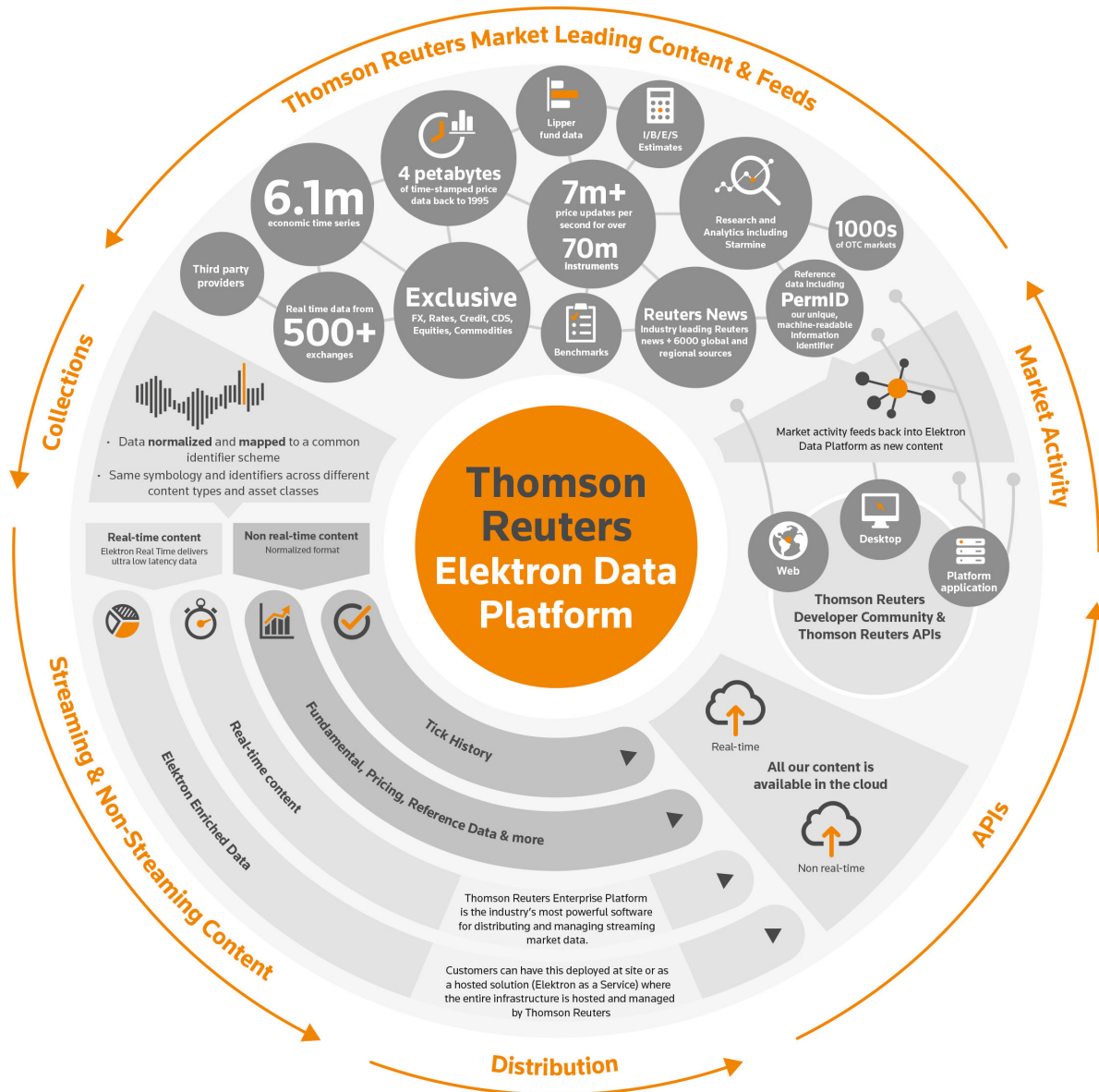
Real-time data and deep analytics help drive winning strategies.

Risk coverage with no gaps

Comprehensive solutions built in.

150 years of trusted answers

Empowering you to make the most important business decisions.



Find out more

For more information about, Thomson Reuters MiFID II venue data solution or any other MiFID II data solutions

Visit mifidii.tr.com

The intelligence, technology and human expertise you need to find trusted answers.



the answer company™
THOMSON REUTERS®