

Thomson Reuters Elektron Data Platform

Real-Time Venue Data For MiFID II

MiFID II is redefining best practice in our industry

Organizations bound by MiFID II now need to demonstrate Best Execution, with Transaction Cost Analysis (TCA) data coming under greater scrutiny than ever before. In addition, to meet the aims of increasing market transparency, over 28 new venues have been created that are providing new data from which people are making trading decisions.

Across the sell-side and buy-side, institutions are automating their trading workflows and this is driving strong demand for a comprehensive price discovery solution, to help provide the levels of transparency and efficiency needed.

These changes, driven by regulation and automation strategies, are leading to a global shift in the way firms conduct their trading operations.

Key Features and Benefits

Thomson Reuters strives to help you fulfill your regulatory and compliance obligations with our single-platform MiFID II data solution.

- We on-board all content from trade reporting venues (APAs, MTFs, etc.) and normalize and enhance all the data sets. This includes real time, reference, time series data, and more.
- We provide two types of feed to best fit your workflow:
 - i. For traders, our **single APA feed** provides live pre- and post-trade data for all asset classes, so you can benefit from full market transparency
 - ii. For fixed income research and strategy validation, our **aggregated feed** provides a single connection to multiple APA / MTF venues, giving you a broad market overview
- To help you meet TCA and BestEx requirements, our Velocity Analytics 8 platform, combined with the venue data, can provide you with a highly customizable analytics solution.

Venues include:

- Thomson Reuters
- Tradeweb APA & MTF
- Trax APA (MarketAxess)
- MTS Bondvision
- Bloomberg APA & MTF*
- Oslo Børs APA
- TRADEcho APA (LSE)
- Cboe Europe APA
- NASDAQ Nordic APA
- Vienna Stock Exchange APA
- Deutsche Boerse APA
- Athens Exchange APA
- Budapest Stock Exchange APA
- Euronext APA
- TP ICAP MTF/OTF*
- Currenex MTF*
- NEX APA*

*Currently being on-boarded

Elektron® Data Platform

Thomson Reuters Elektron Data Platform integrates and delivers all the content and capabilities you need to make smarter trading and investment decisions, ahead of your competitors.

A trusted source for your data

Lower total cost of ownership. Higher return on investment.

Powers your success

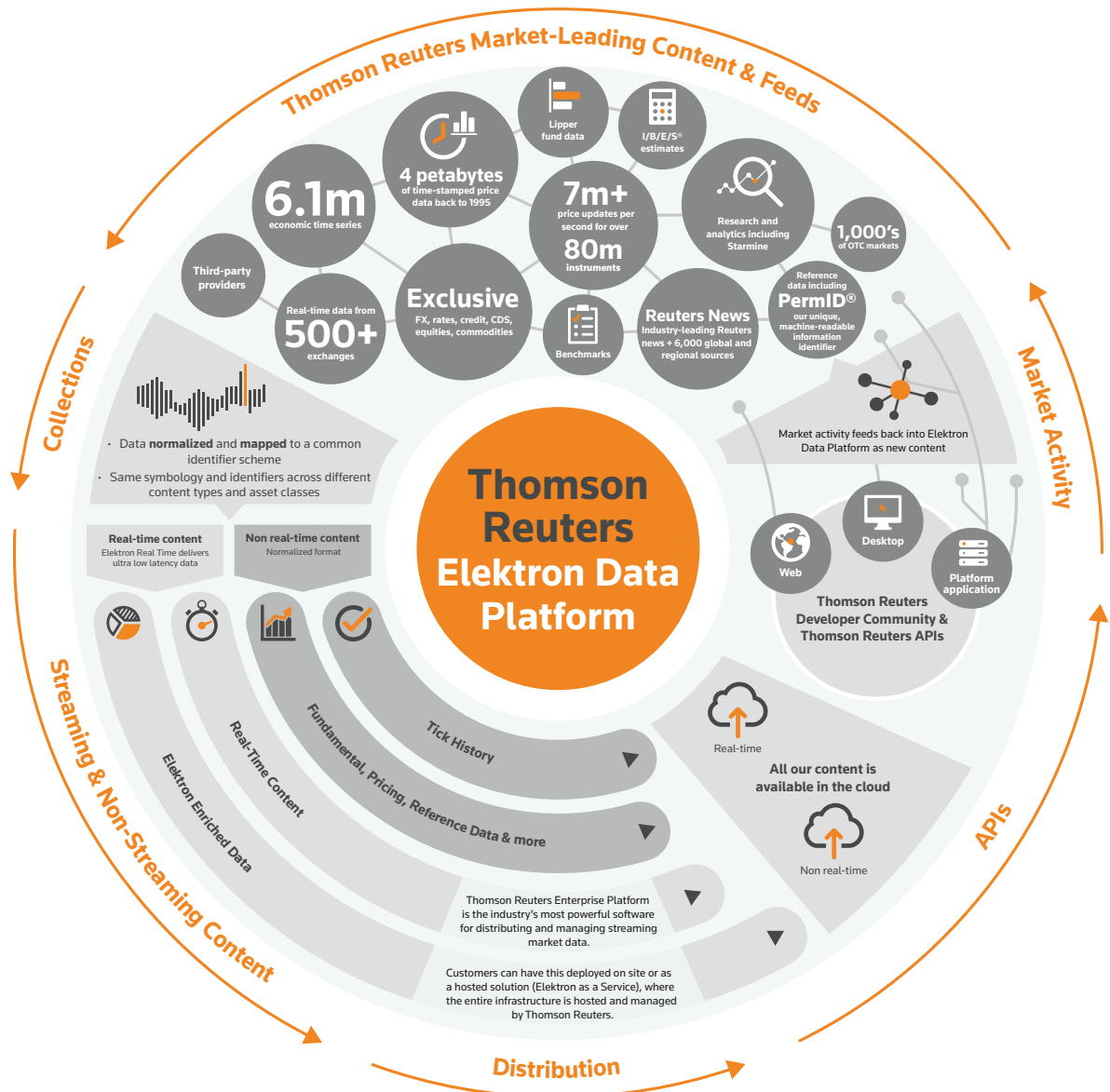
Real-time data and deep analytics help drive winning strategies.

Risk coverage with no gaps

Comprehensive solutions built in.

150 years of trusted answers

Empowering you to make the most important business decisions.



Find out more

For more information about, Thomson Reuters MiFID II venue data solution or any other MiFID II data solutions

Visit mifidii.tr.com

The intelligence, technology and human expertise you need to find trusted answers.



the answer company™
THOMSON REUTERS®